

TRIBOULET INDUSTRIE

RACCORDS

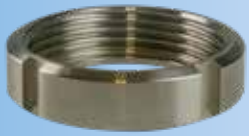
RACCORD DIN
RACCORD SMS
RACCORD MACON

ALIMENTAIRES

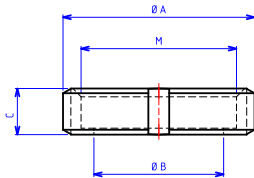


Raccord DIN

DIN coupling



Écrou pour raccord DIN SS304
Nut

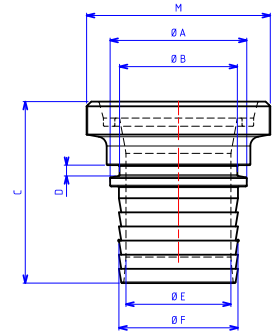


DN	Référence	Cote A	Cote B	Cote C
DN40	30/DINN40SS	78	49	21
DN50	30/DINN50SS	92	62	22
DN65	30/DINN65SS	112	80	25
DN80	30/DINN80SS	127	94	29
DN100	30/DINN100SS	148	115	31



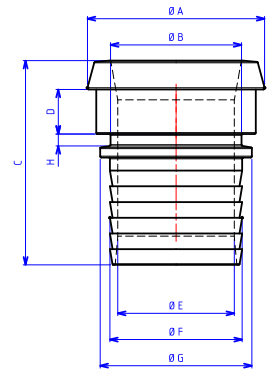
Raccord mâle DIN SS316
Male with collar hose shank

DN	Référence	Cote A	Cote B	Cote C	Cote D	Cote E	Cote F	Filetage M
DN40	30/DINM40SS	45	38	69	4.5	33	38.5	RD 65 x 1/6
DN50	30/DINM50SS	58	50	77	4.5	44.5	50.5	RD 78 x 1/6
DN65	30/DINM65SS	73	63	98	5.5	57	63.5	RD 95 x 1/6
DN80	30/DINM80SS	85	75	116	5.5	68.6	75.5	RD 110 x 1/4
DN100	30/DINM100SS	110	100	137	8	93.5	101.5	RD 130 x 1/4

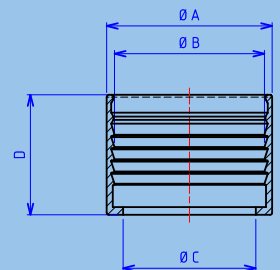


Raccord femelle DIN SS316
Female with collar hose shank

DN	Référence	Cote A	Cote B	Cote C	Cote D	Cote E	Cote F	Cote G	Cote H
DN40	30/DINF40SS	56	38	71	19	33	38.5	45	4.5
DN50	30/DINF50SS	68	50	78	17	44.5	50.5	58	4.5
DN65	30/DINF65SS	86	63	98	23	57	63.5	73	5.5
DN80	30/DINF80SS	100	75	110	23	68.6	75.5	85	5.5
DN100	30/DINF100SS	121	100	134	23	93.5	101.5	110	8



Jupe pour raccord DIN & SMS SS304
Ferrule

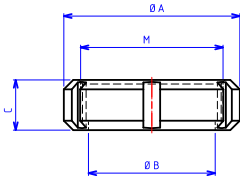


Raccord SMS

SMS coupling



Écrou pour raccord SMS SS304
Nut

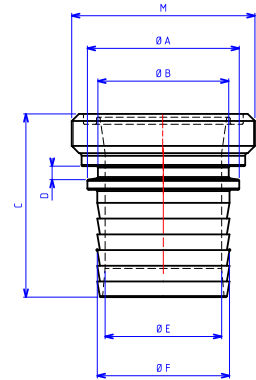


DN	Référence	Cote A	Cote B	Cote C	Filetage M
DN40	30/SMN40SS	74	48	23	RD 60 x 1/6
DN50	30/SMN50SS	84	60.5	24	RD 70 x 1/6
DN65	30/SMN65SS	100	74	28	RD 85 x 1/6
DN75	30/SMN75SS	114	87	30	RD 98 x 1/6
DN100	30/SMN100SS	138	113	31	RD 125 x 1/4



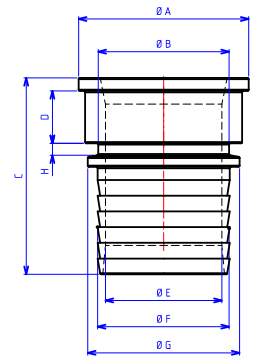
Raccord mâle SMS SS316
Male with collar hose shank

DN	Référence	Cote A	Cote B	Cote C	Cote D	Cote E	Cote F	Filetage M
DN40	30/SMM40SS	45	38	62	4.5	33	38.5	RD 60 x 1/6
DN50	30/SMM50SS	58	50	70	4.5	44.5	50.5	RD 70 x 1/6
DN65	30/SMM65SS	73	63	83	5.5	57	63.5	RD 85 x 1/6
DN75	30/SMM75SS	85	75	97	5.5	68.6	75.5	RD 98 x 1/6
DN100	30/SMM100SS	110	100	119	8	93.5	101.5	RD 125 x 1/4



Raccord femelle SMS SS316
Female with collar hose shank

DN	Référence	Cote A	Cote B	Cote C	Cote D	Cote E	Cote F	Cote G	Cote H
DN40	30/SMF40SS	55	38	66	19	33	38.5	45	4.5
DN50	30/SMF50SS	65	50	75	20	44.5	50.5	58	4.5
DN65	30/SMF65SS	80	63	92	24	57	63.5	73	5.5
DN75	30/SMF75SS	93	75	106	26	68.6	75.5	85	5.5
DN100	30/SMF100SS	118	100	128	27	93.5	101.5	110	8



DN	Référence	Cote A	Cote B	Cote C	Cote D
DN40	30/DINSMSJ40SS	60	53	46	46
DN50	30/DINSMSJ50SS	74.5	67.5	59.5	54
DN65	30/DINSMSJ65SS	89	82	74	68
DN75	30/DINSMSJ75SS	100.5	93	86.5	80
DN100	30/DINSMSJ100SS	128.5	120	112.5	100



Raccord MACON

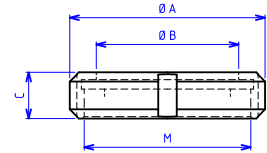
Macon coupling



Écrou pour raccord MACON SS304

Nut

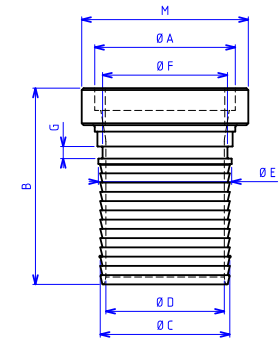
DN	Référence	Cote A	Cote B	Cote C	Filetage M
DN40	30/3406005	70	47	25	M55 x 3
DN50	30/3506005	80	57	25	M67 x 3
DN70	30/3706005	106	77	25	M90 x 3.5



Raccord mâle MACON SS316

Male with collar hose shank

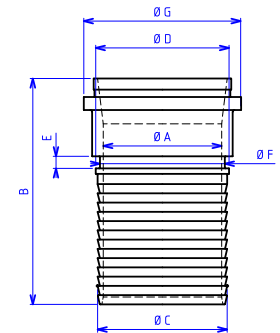
DN	Référence	Cote A	Cote B	Cote C	Cote D	Cote E	Cote F	Cote G	Filetage M
DN40	30/3406007	45	67	39.5	34	45.6	38	6	M55 x 3
DN50	30/3506007	55	77	51.5	46	55	51	6	M67 x 3
DN70	30/3706007	76	96.5	70	64	72	67.5	6.5	M90 x 3.5



Raccord femelle MACON SS316

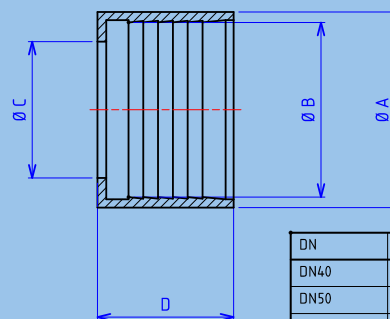
Female with collar hose shank

DN	Référence	Cote A	Cote B	Cote C	Cote D	Cote E	Cote F	Cote G
DN40	30/3406006	34	82	39.5	45.5	6	38	49.8
DN50	30/3506006	46	89	51.5	55	6	51	62
DN70	30/3706006	64	107	70	72	6.5	67.5	85



Jupe pour raccord MACON SS304

Ferrule



DN	Référence	Cote A	Cote B	Cote C	Cote D
DN40	30/3406921	60	53	46	46
DN50	30/3506921	74.5	67	60	55
DN70	30/3706921	90	82	73.5	65
-	-	-	-	-	-

TRIBOULET INDUSTRIE

2, rue de l'Industrie - ZI Bois Baron - BP 30209
69823 BELLEVILLE-EN-BEAUJOLAIS cedex
Tél. +33 (0)4 74 66 09 15 - Fax +33 (0)4 74 66 59 35
WWW.TRIBOULET-INDUSTRIE.COM